



Ethics Assets (P) Ltd

Redefine Housing...



ARPIT

Dream Homes that begin with an 'INFINITY'



Ethics Assets (P) Ltd

Redefine Housing...

CREDAI **ODISHA**



PROFILE

Established in 2010, Ethics Assets (P) Ltd is one of Odisha's finest & trustworthy real estate developers. Renowned for its commitment, quality assurance and excellence service in real estate development, it has successfully delivered over 12 prime real estate projects, with more than 10 projects are under development across multi-asset classes.

Ethics Assets portfolio spans across high-end residential developments, built-to-suit office spaces, hotels, convention centers and future luxury CONDOS.

Recipient of multiple awards in luxury homes and office space development, it is synonymous with premium finish, intelligent floor layouts, innovative solutions, high-quality execution, and after-sales maintenance.

We like to think different and be different.

Ethics Assets (P) Ltd operates in developing the A BEAUTIFUL DREAM- An Ethics Assets HOME i.e FLATS, VILLAS, SIMPLEX, DUPLEX & CONDOS for your beautiful life. We are HONOURED!

The future is a property that Ethics Assets (P) Ltd aspires to develop to its full potential on the foundation of expertise, professionalism, integrity and synergy.

The big picture encompasses property development of global standards that deliver superior value and returns to customers and stakeholders.

Build on core values and competencies, commit to and ensure quality across the gamut of development, empower people and leverage associations to grow a business, enrich work, life and leisure experiences while ensuring greater results.

**Team,
Ethics Assets (P) Ltd**

The Home coming with A CLASS:

Ethics Assets (P) Ltd

Presents ARPIT...

We are pleasure to introduce as Ethics Assets (P) Ltd with decade of expertise in real estate industry in the capital city of ODISHA. We are going to present more than hundreds of premium simplex & duplex in the phase-I location at Phulnahkara, near to Trinath Bazaar.

Ethics Arpit located at a fairy style green atmosphere where you can tune in to its great vibes. Our projects units come with green environment, modern & spacious designs as well as great service which makes you feel the peaceful living experiences in our residential units. Each residential unit will welcome to a home where eco-friendly blends with affordability. We take care of quality as well as glass clear title so as to give homebuyer a hassle free as well as happy ownership.

Dream Homes that begin with an 'INFINITY'

Your home is something that you wait for years... something that you cherish for a lifetime... something that reflects you... and something that you can never compromise on! Which is why, this dream house of yours, which more often than not is a once in a lifetime investment, should be chosen with ultimate care and caution. It should ideally be from a highly reputed source that not only guarantees you unmatched value and lifelong peace of mind, but fulfills all your aspirations and matches up to all expectations vis-à-vis location, quality, features, amenities & facilities.

Get set to lead life in your own island of privacy surrounded by the grandest of amenities & facilities, spread across 25 acres, right in the heart of TWIN CITY, CUTTACK-BHUBANESWAR mid-off way near DPS KALINGA, PHUL NAKHARA!

The premises fully benefitted with these below ambiances:-

#Gated Community

#Vasthu Design

#Individual Borewell

#Community Hall



#Jogging Track

#ATM

Children Park

#Black Top Road

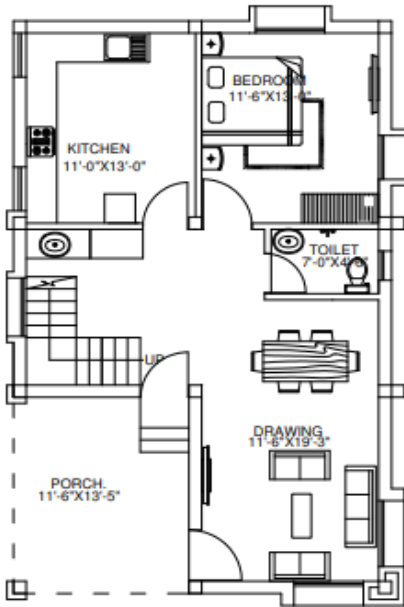


#Street Light

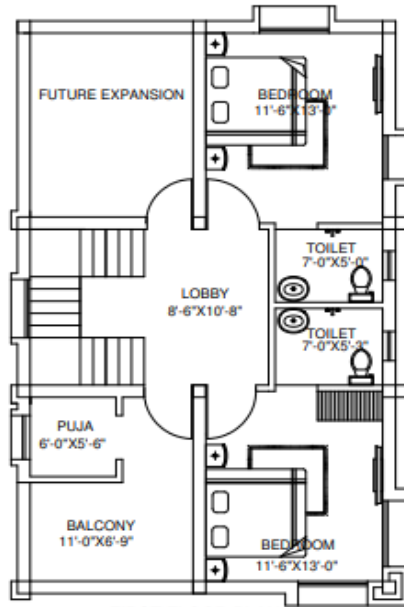
#30" Main Road

#Foundation For Triplex

#Needs Stores



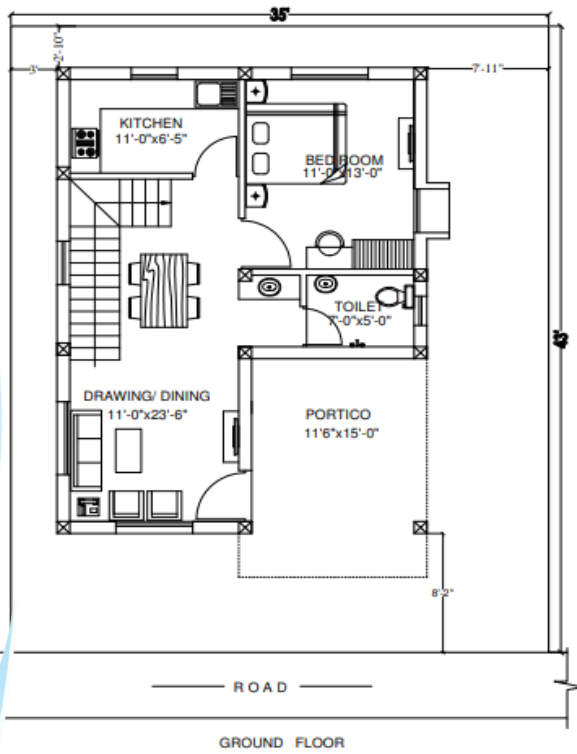
GROUND FLOOR PLAN



FIRST FLOOR PLAN

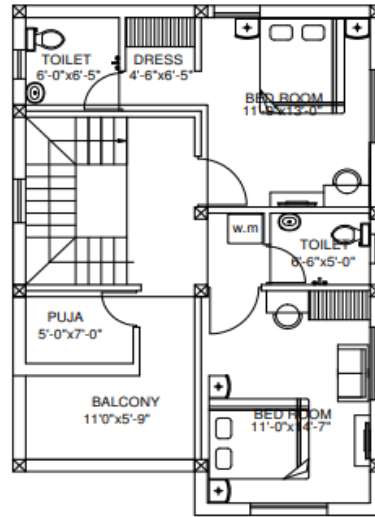
Project:-		PROPOSED RESIDENTIAL HOUSING PROJECT "ETHICS ARPIT" DEVELOPED BY ETHICS ASSETS PVT. LTD.
Drawing title:-		ELEVATION
Dwg. no.:-	Scale:-	
SA/EA/W001	N.T.S	
Rev. suffix:-	Date:-	20-04-2016





ROAD

GROUND FLOOR



FIRST FLOOR

project:-	
PROPOSED RESIDENTIAL HOUSING PROJECT "ETHICS ARPPT" DEVELOPED BY ETHICS ASSETS PVT. LTD. NAKHEARA	
drawing title:-	
CONCEPTUAL FLOOR PLAN	
reg. no.:-	scale:-
SA/EA/C001	1"=8'-0"
rev. suffix:-	date:-
	09-06-2017

architect:-
or. ashish parida
engineer:-
draft by:-
consultant:-



SPECIFICATIONS TO BE PROVIDED IN "ETHICS ARPIT"

STRUCTURE

STRUCTURE:

RCC frame structure with in filled fly ash brick wall

PLINTH BAND:

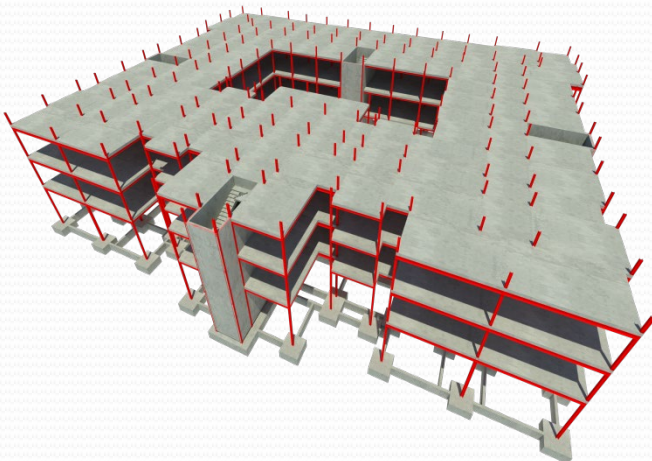
RCC plinth band will be provided using 16mm, 12mm & 10mm dia M.S ROD as required & required no of columns as per the design specification.

LINTEL:

As per specification

ROOF:

RCC roof with water proofing treatment shall be provided at the height of 10.2" from plinth level as per the required design.



**Structure
Design**

DOORS, WINDOWS, GRILLS, VENTS & RAILING

FRONT DOORS:

Quality teak wood design with Godrej lock, smooth hinges, aristocratic premium quality door knob & handle.

DOOR FRAMES:

Sal wood except bathrooms & head room

INSIDE DOORS:

Decorative finish door, smooth hinges, metallic knob & locks.

BATHROOM DOORS:

PVC doors with frames

VENTS:

Standard with provision for exhaust fan.

GRILLS:

MS Grill with standard design, double coat painting

STAIRCASE RAILING:

Stainless STEEL

WINDOW:

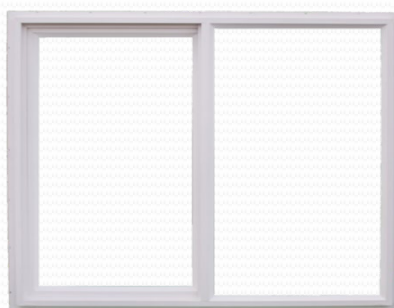
Aluminum windows with safety grills

BALCONY :

Stainless Steel railing

HEAD ROOM:

RCC slab will be provided over head room with Iron Door and frame.



FLOORING & GRANITE/MARBLE WORKS

PARKING:

STAIRCASE:

INTERNAL FLOORS:

BATHROOM & WET AREA:

KITCHEN AREA:

PLUMBING & FIXTURES

INTERNAL PIPING:

ETERNAL PIPING:

BATHROOM, KITCHEN & DINNING FIXTURES

DETAILS OF PH WORK :

ALTO-SOAP CASE :

ALTO-TOWEL RAIL:

HEALTH FAUCET:

ALTO- TOWEL RING :

MIRRORS:

FIXTURES:

SINK:

Checkedered Tiles

Granite

Vitrified Tiles with 4" skirting on the side

Anti-skid Ceramic Tiles Wall Tiling With Dado Up To 7' Height In Bathrooms

Granite Counter With Glazed Tiles Up To 3ft" from cooking platform

**CPVC Pipes With Provision For Washing Machine, Geysers & Aqua Guard
CPVC Pipes**

Premium Branded Fittings (HINDWARE)

Provision For Washing Machine

All Bathrooms And Dinning Area Basin

All Bathrooms

All Bathrooms

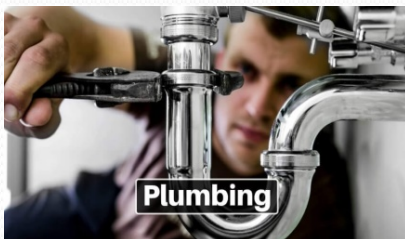
Dinning Area Basin

In Front Of Every Basin

Except In Kitchen

European Pan

Stainless Sink In KITCHEN



ELECTRICALS

INTERNAL WIRING:

Concealed conduct with copper wiring, adequate outlet for light, fan, plugs, calling bell & provision for Telephone, TV, Internet, Geyser in Bathroom And A/C Plug points for cooking range, Refrigerator, Microwave Ovens, Mixer/Grinders in kitchen.
2 Nos

AC POINTS:

TV POINTS:

EXTERNAL FIXTURES:

Master Bedroom & Drawing
Modular Switches of Brand are **HAVELLS/L&T**

PAINTINGS:

Exterior Cement wash, Acrylic Emulsion Weather Proof Paint **(Berger/Dulux)**
Interior 2 Layer Putty, Primer with 2 Coats Acrylic Emulsion Paint **(Berger/Dulux)**

WATER SUPPLY & DRAINAGE:

Individual bore well 5" for better water supply & over headwater tank in each duplex, soak pit septic tank for bathroom & kitchen drainage water.

BOUNDARY:

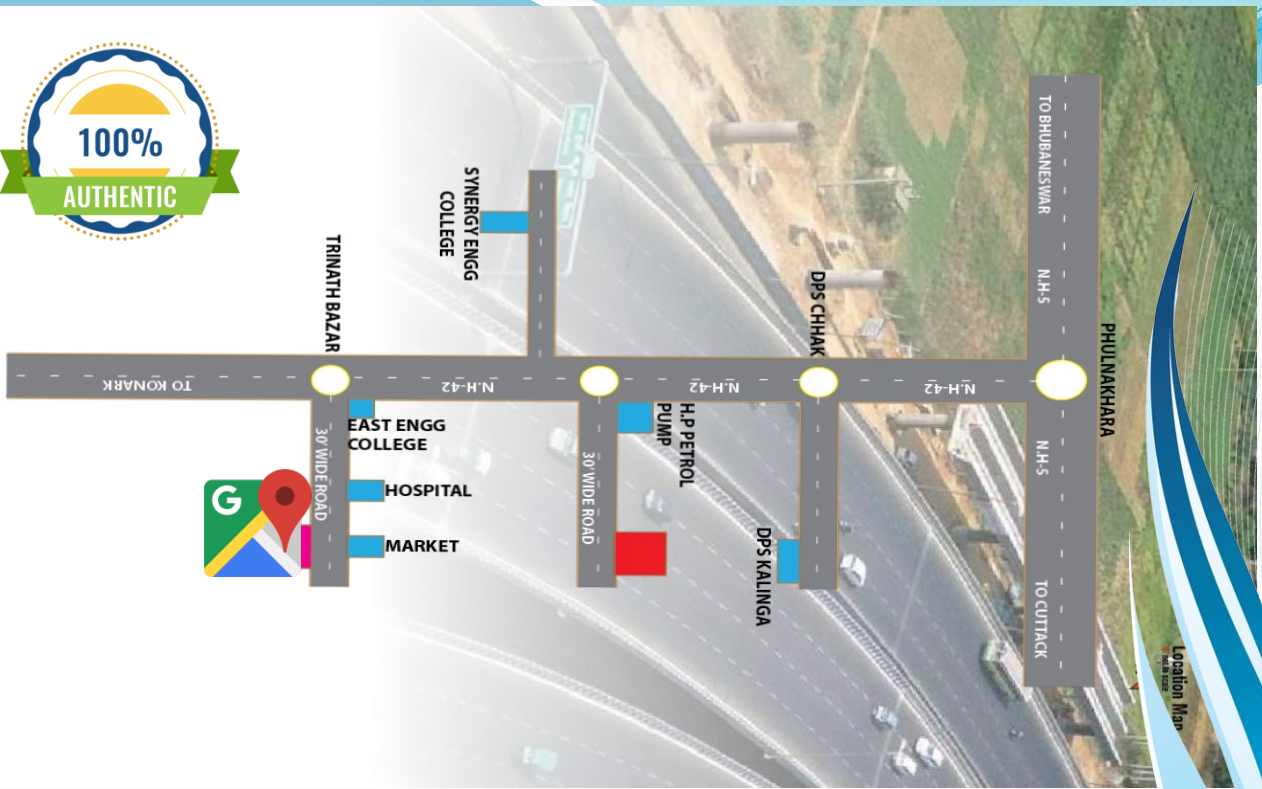
Gated Community

INTERNAL ROAD:

All internal roads will make with **INTERBLOCKING BLOCKS.**

PARAPET WALL:

Parapet wall made of Bricks up to 2'6" height with 5" thickness will be provided.



DPS KALINGA - 4 Kms
PHUL NAKHARA- 9 Kms
RASULGARH-17 Kms
Airport- 24 Kms
Railway Station- 18 Kms



Dream Homes that begin with an 'INFINITY'

ARPIT



Ethics Assets (P) Ltd

Redefine Housing...

ETHICS ASSETS PVT. LTD.

Plot No - 121, District Centre, Chandrasekharpur, Bhubaneswar - 751 016

Phone : 0674 - 2747141

Customer Care : 9090445566,

E-mail : ethicsassets@gmail.com, Website : www.ethicsassets.in

